



HiPOD 2.0

PRIVACY REDEFINED



Furnishing
For Life



HiPOD 2.0

PRIVACY REDEFINED

HiPOD 2.0 is a versatile pod that can be used in a variety of settings, from offices to homes. Its stylish design and acoustic features make it a great choice for people who want a quiet space to work, study, or relax.

HiPOD 2.0 is made from sustainable materials and has been tested by international certification organizations to ensure its sound insulation effects. This makes it the perfect workspace for improving productivity and privacy.





What are the benefits of using **HiPOD 2.0**



High Acoustic Rating

Has a high acoustic rating of TUV -28.3 dB/NIC, making it ideal for users who need a quiet space to work or study.



High Quality Sustainable Material

Made from high-quality, sustainable materials.



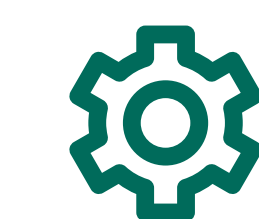
Air Purifying System with HEPA Filter

Equipped with an air purifying system with a HEPA filter. This ensures that the pod's air is clean and comfortable for users.



Motion Sensor for Energy Saving

Motion sensor activates the pod's LED lighting and air ventilation system when someone enters the pod. These systems are then automatically turned off after 5 minutes of inactivity, which helps to save energy.



Quick And Easy To Assemble

Improved design makes it quick and easy to assemble. The pod can be assembled in just 30 minutes, without the need for any tools





HiPOD 2.0
PRIVACY REDEFINED



HIGH ACOUSTIC RATING

BE QUIET, PLEASE

HiPOD is a soundproof pod that has been tested to reduce speech level by 28.3 dB. This creates a serene and relaxing environment that counters stress and anxiety, and helps to maximize concentration and satisfaction.

HiPOD has also achieved GREENGUARD Certification, which means it meets some of the world's most rigorous third-party chemical emissions standards. This helps to reduce indoor air pollution and the risk of chemical exposure, and can contribute to LEED credits.

Certified by



HIGH ACOUSTIC RATING

D_{S,A} - 28.3 dB

Based on ISO 23351-1 standard



**UL GREENGUARD
CERTIFIED**

PRODUCT CERTIFIED FOR
LOW CHEMICAL EMISSIONS
UL.COM/GG
UL 2818





HiPOD 2.0

PRIVACY REDEFINED

REDUCE, REUSE, RECYCLE

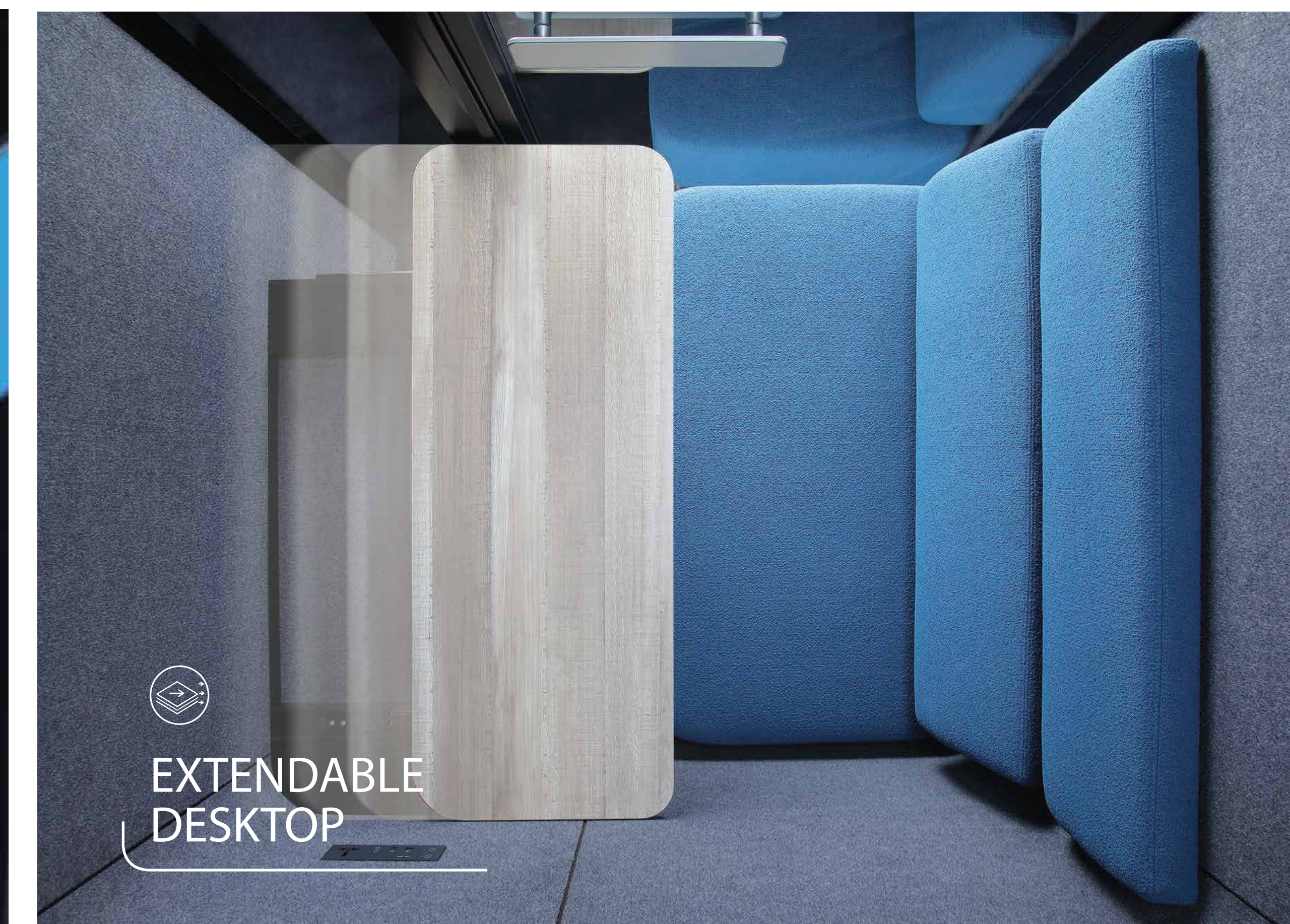
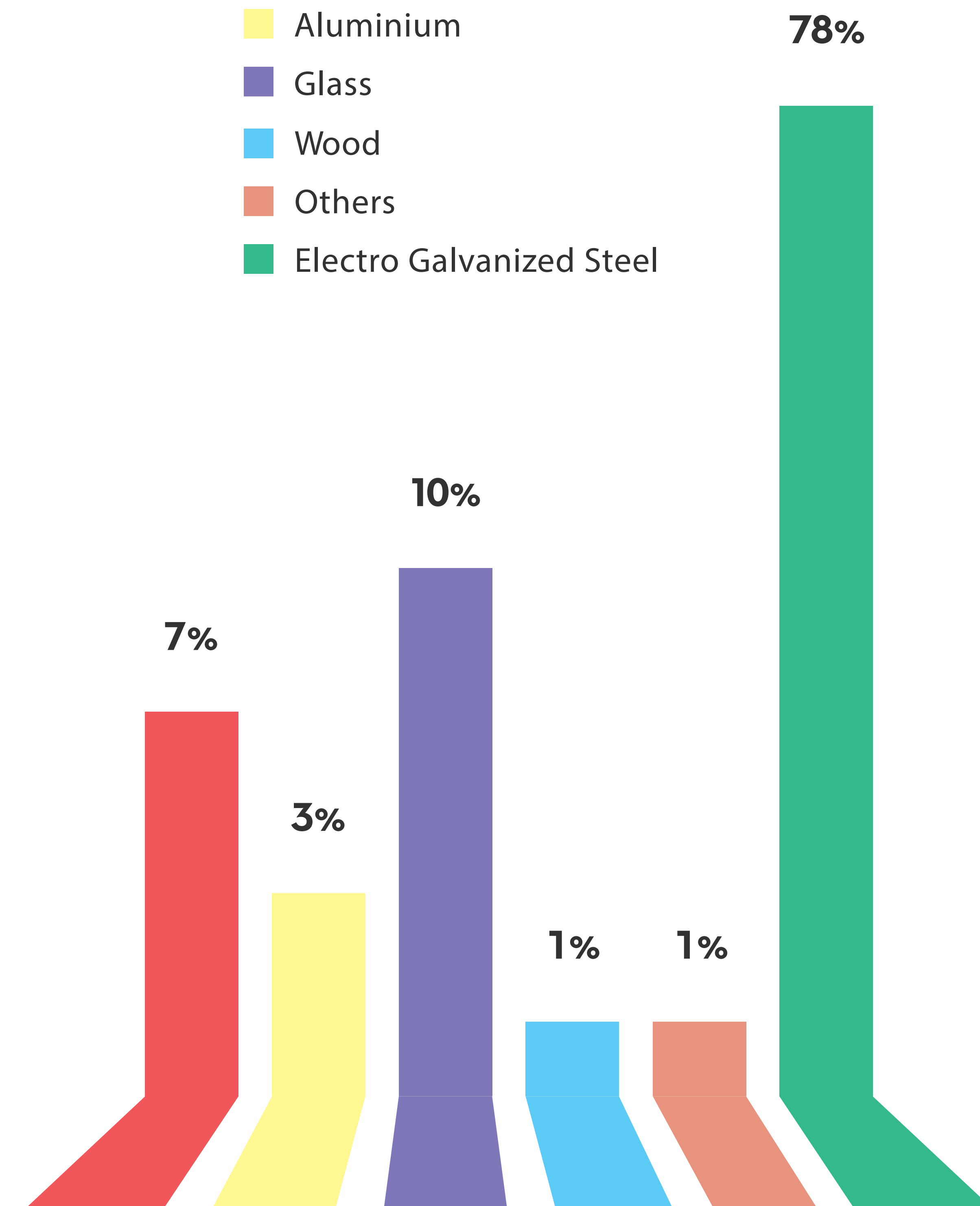
HiPOD is committed to sustainability. It uses non-toxic polyester acoustic material, which is recyclable and reusable. This makes it a sustainable choice for soundproofing.

HiPOD also uses galvanized steel as a primary manufacturing material, which helps to reduce the environmental burden on the planet.

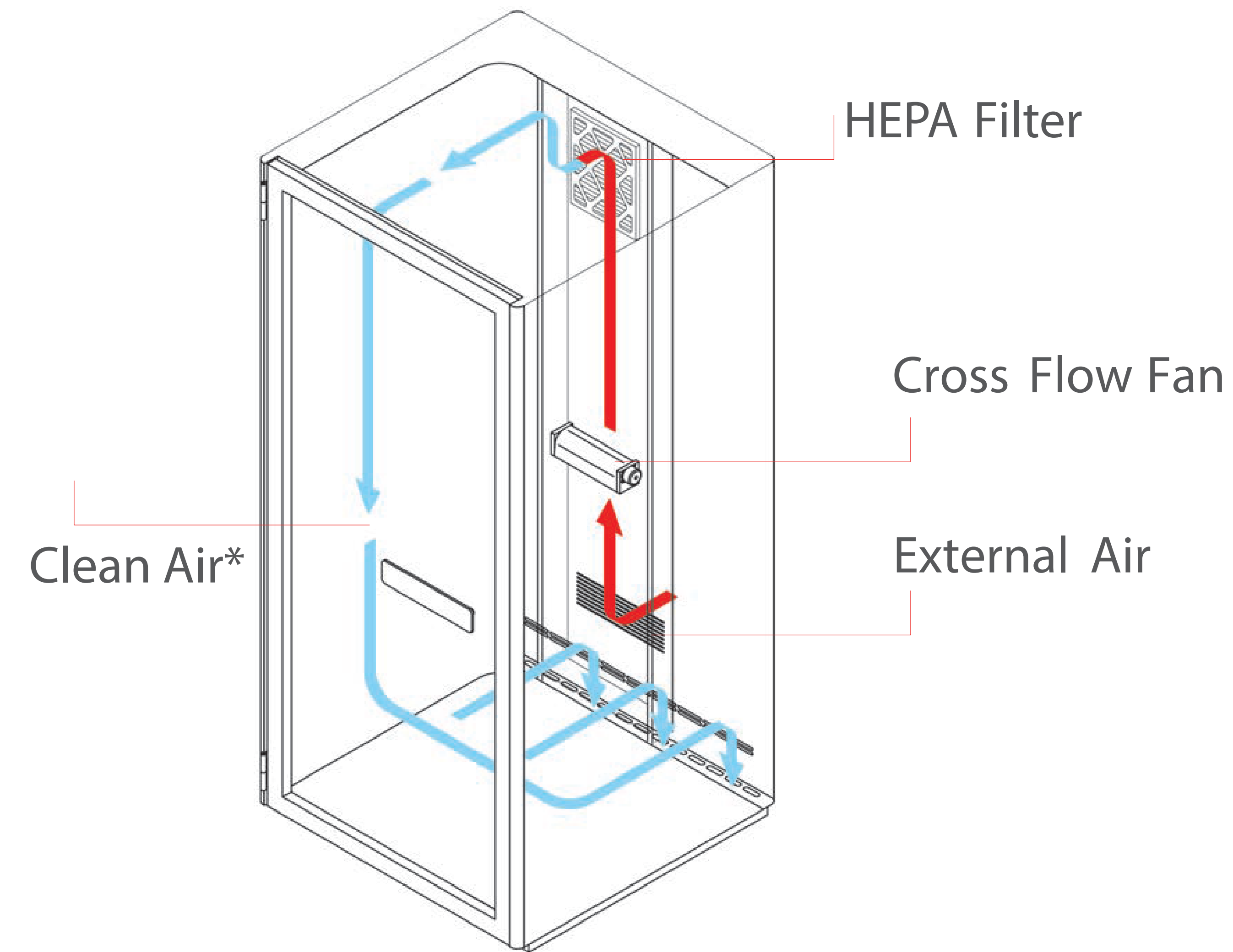


SPOD 2.0

- Acoustic Material
- Aluminium
- Glass
- Wood
- Others
- Electro Galvanized Steel



BREATHE EASY



*Air cleanliness by particle concentration

HiPOD 2.0 provides clean air for a pleasant and healthy environment.

The air ventilation system ensures that there is enough fresh air inside the pod, while the HEPA filter captures airborne particles to cleanse the air and reduce allergic responses. The filtered air meets the ISO 14644-1:2015 standard.





S POD 2.0

S POD is a single-person pod for privacy.

You can carry out work that requires a high level of privacy, such as signing contracts, making phone calls, and video conferencing.



W POD 2.0

W POD is a pod with extendable desk.

The ergonomic desk allows you to adjust your working position and provides a storage space, making it suitable for individuals who want to work over a long period of time.



D POD 2.0

D POD is a pod for group discussions.

The comfortable sofas allow users to have relaxed discussions without disturbance, aiming to achieve satisfaction and better results.

* High stool not included.



C POD 2.0

C POD is a pod for meetings, entertainment, and relaxing.

It has a meeting table with integrated charging ports, perfect for discussion and brainstorming. The L-shaped sofa offers a casual yet private space for folks.

* Side table and TV not included

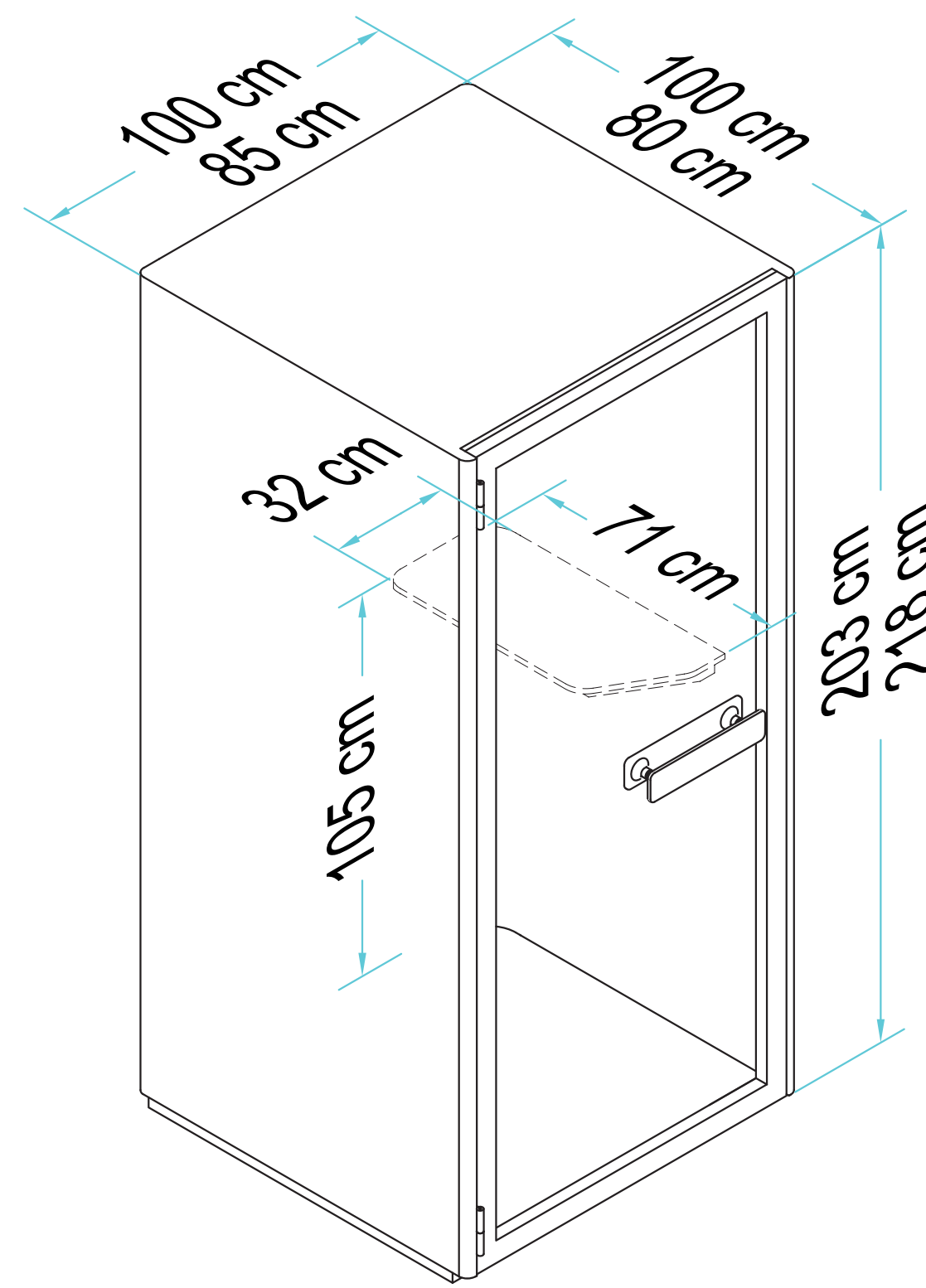


M POD 2.0

M POD is designed to fit up to five people, ideally for meeting.

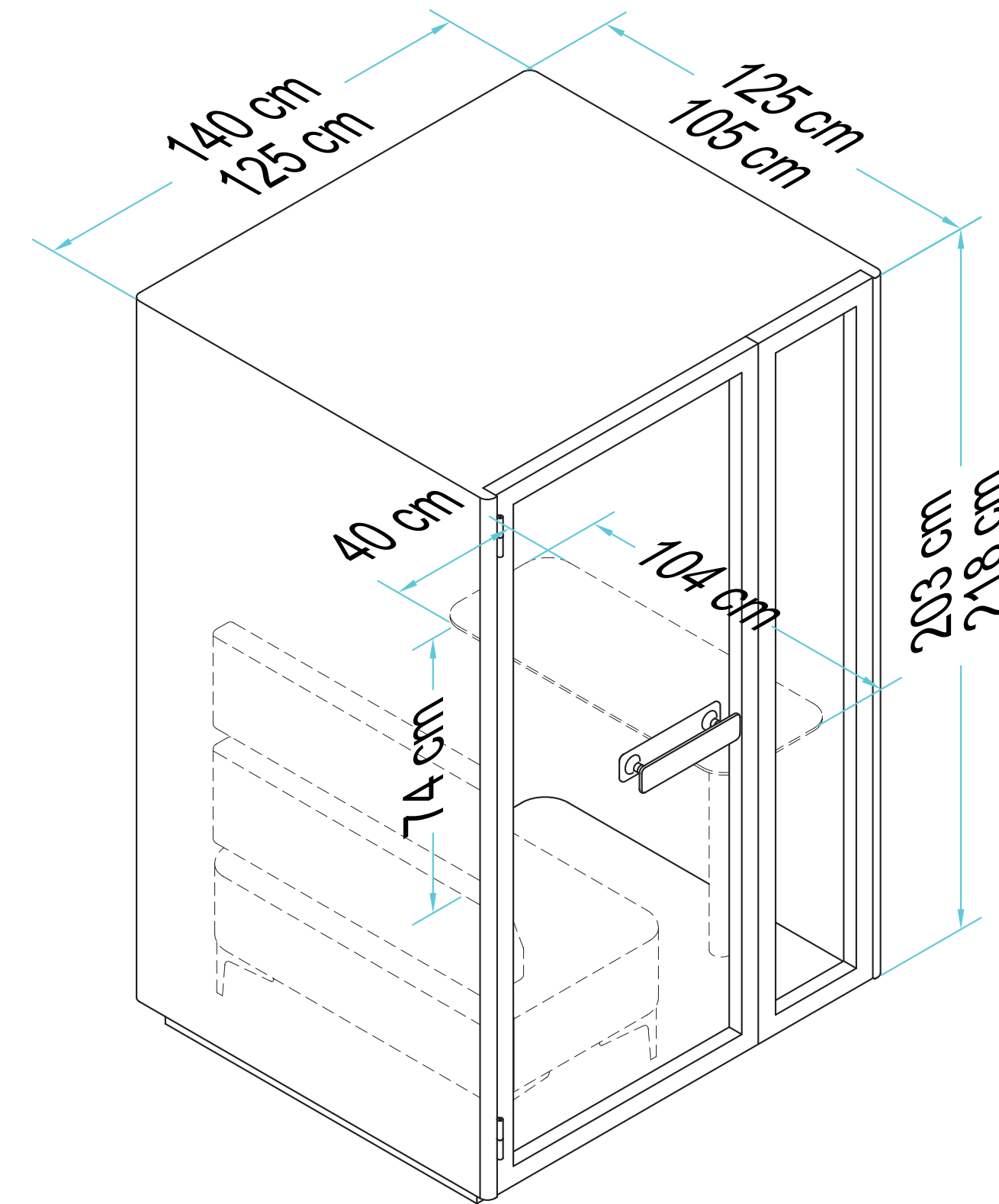
The meeting table with integrated charging ports are perfect for discussion and brainstorming. Choice of L-shaped sofa offers a casual yet private moments for folks.

*Chairs and TV not included



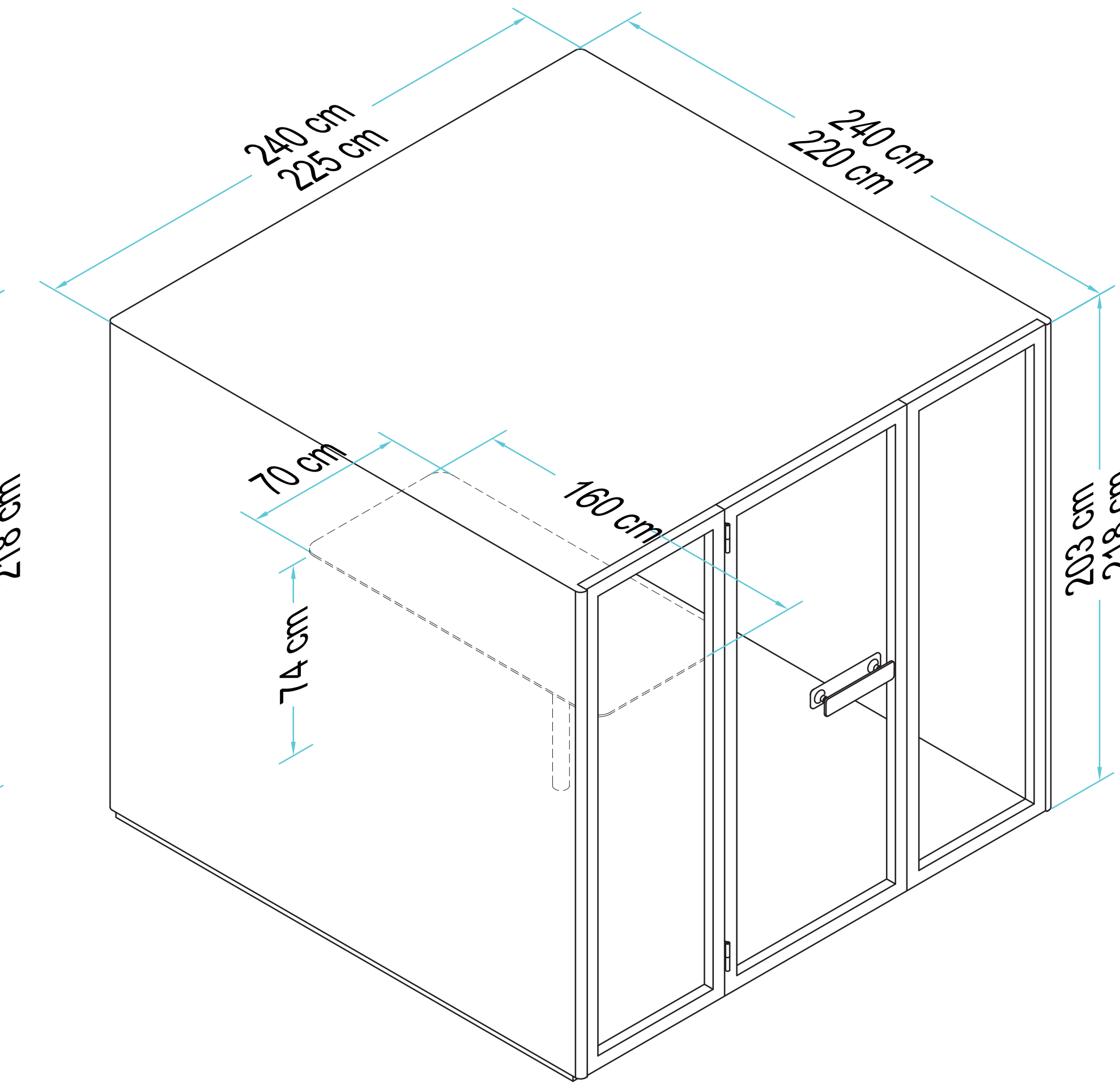
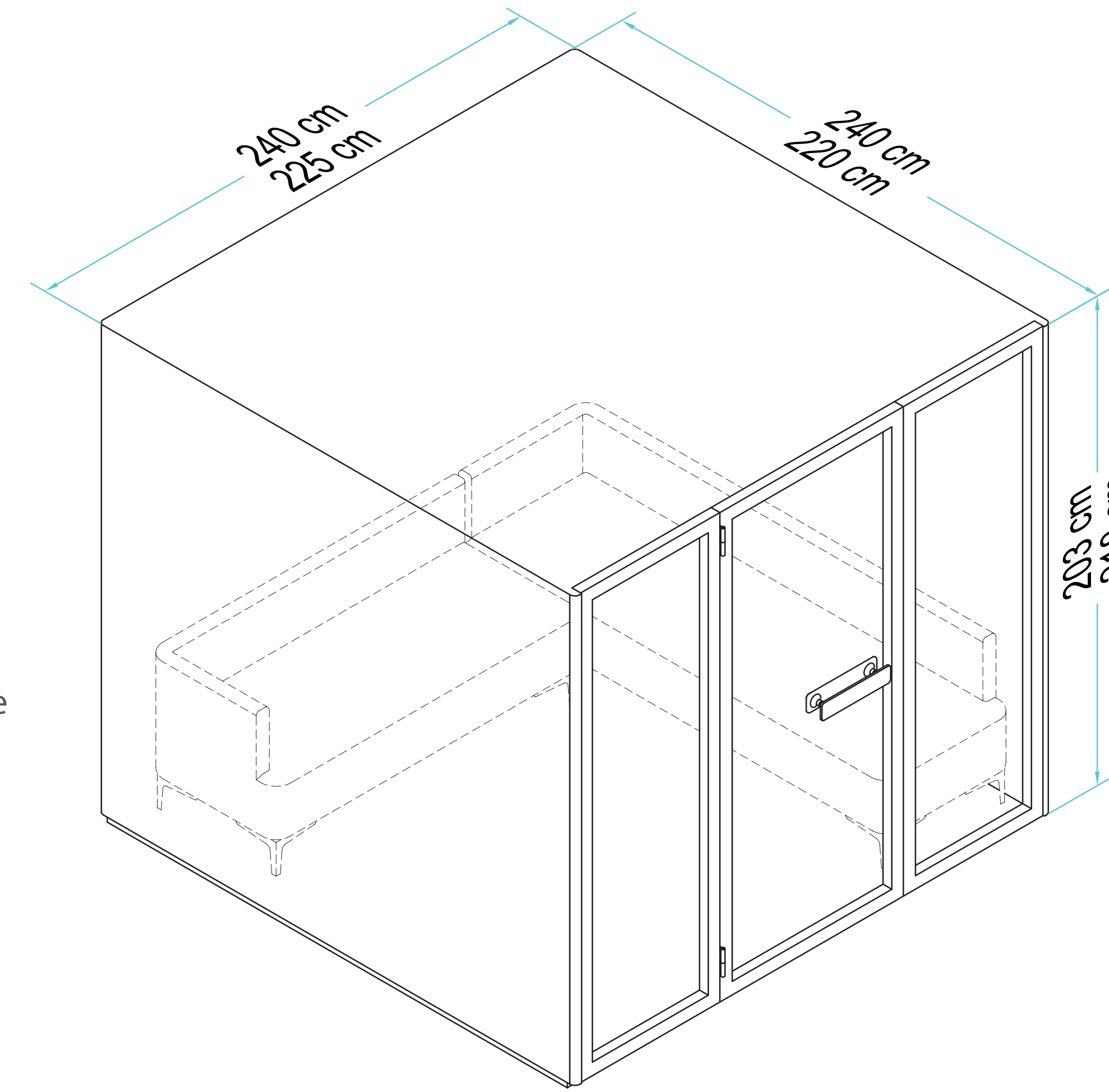
S POD 2.0

1. Laminated Desktop
2. Castor *Optional
3. Power Consumption: 0.18 A
4. Net Weight: 278kg



W POD 2.0

1. Extendable Desktop With Storage Space
2. Exclusive Design Of Sofa With Backrest
3. Castor *Optional
4. Power Consumption: 0.18 A
5. Net Weight: 405 kg

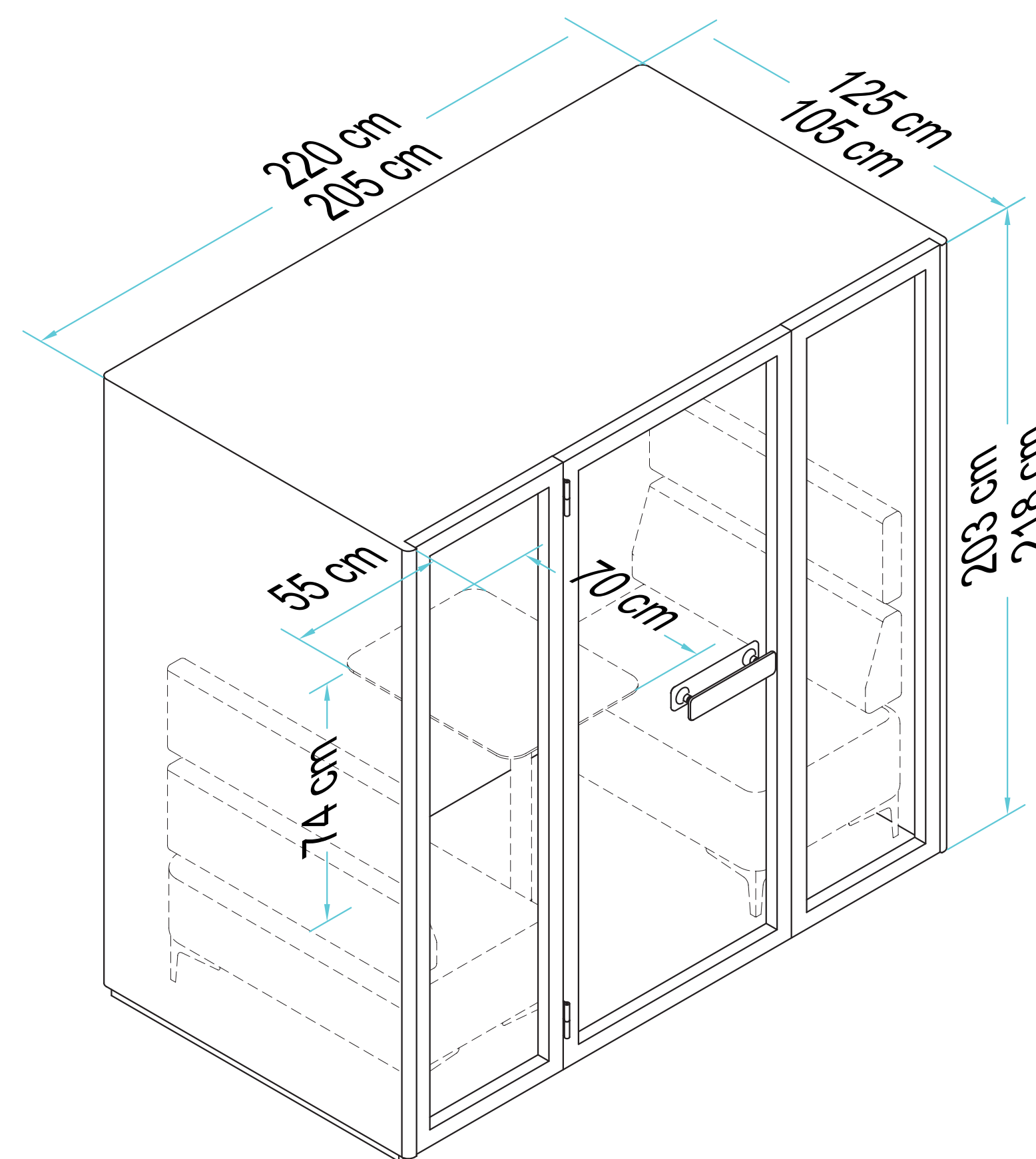


C POD 2.0

1. Selections Of Furnishing:
 - Exclusive L-Shaped Sofa
 - Meeting Table With Integrated Charging Ports
 - Bare Unit
2. TV Bracket With AC Power Socket *Optional
3. Power Consumption: 0.47 A
4. Net Weight: 893 kg

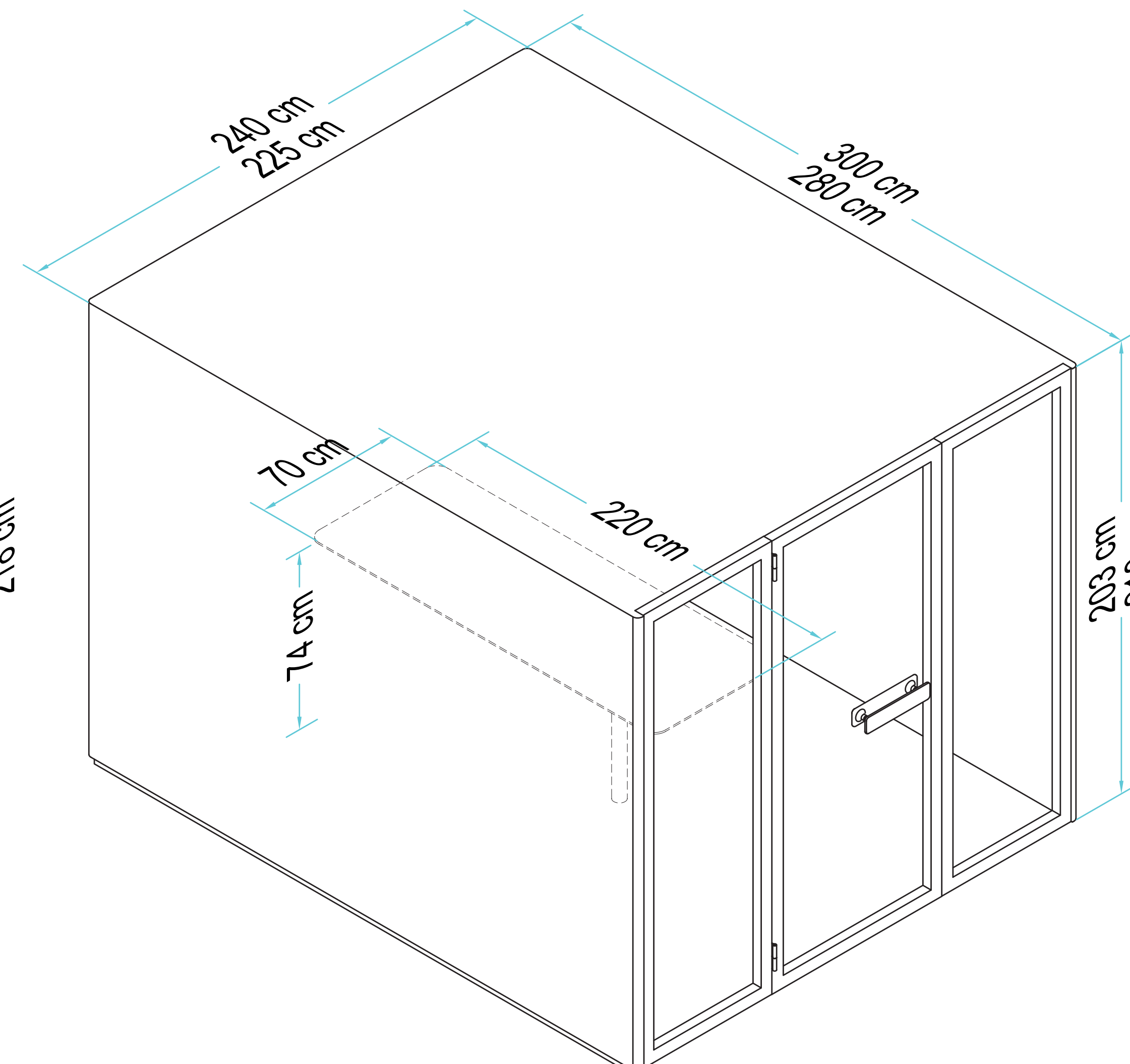
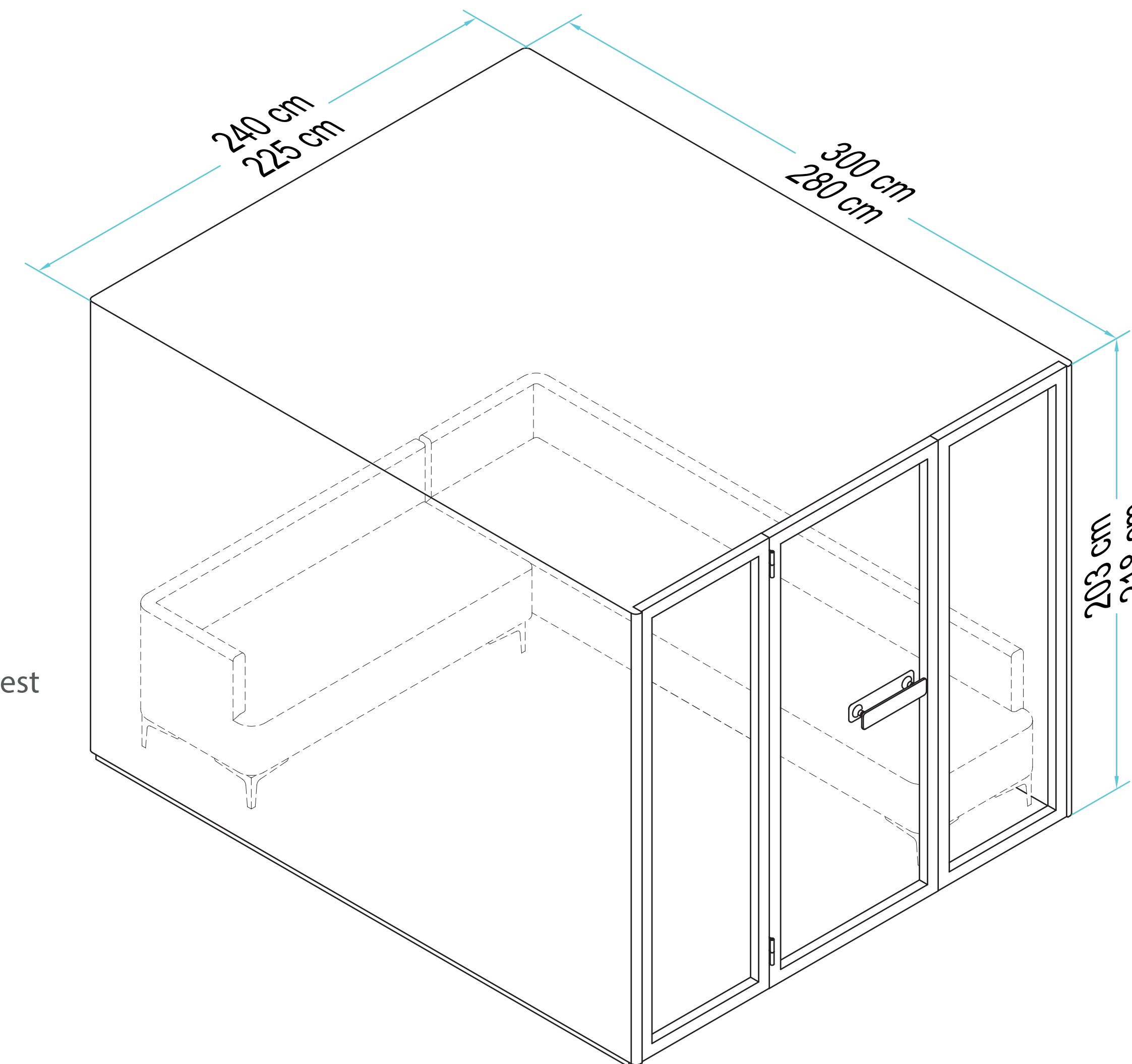


**QUICK
AND
EASY TO
ASSEMBLE**



D POD 2.0

1. Laminated Desktop
2. Exclusive Design Of Sofa With Backrest
3. Castor *Optional
4. Power Consumption: 0.33 A
5. Net Weight: 532 kg



M POD 2.0

1. Selections Of Furnishing:
 - Exclusive L-Shaped Sofa
 - Meeting Table With Integrated Charging Ports
 - Bare Unit
2. TV Bracket With AC Power Socket *Optional
3. Power Consumption: 0.47 A
4. Net Weight: 967 kg

EXTERIOR

COLOUR SELECTION



SMOKE WHITE



CHARCOAL BLACK



SILVER



SPACE GREY



SKY BLUE



LAGOON BLUE



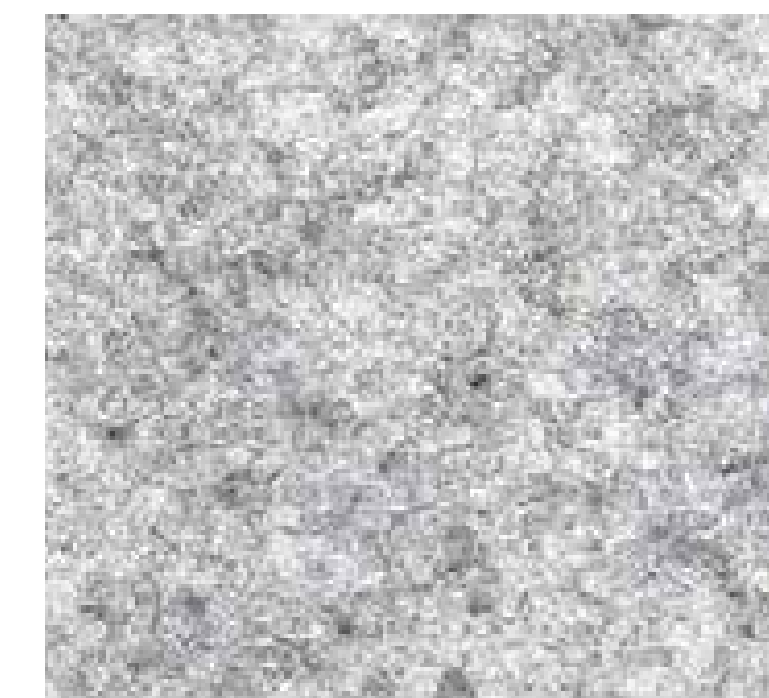
ROSE PINK



DANDELION YELLOW

INTERIOR

ACOUSTIC SHEET COLOUR SELECTION



Light Grey

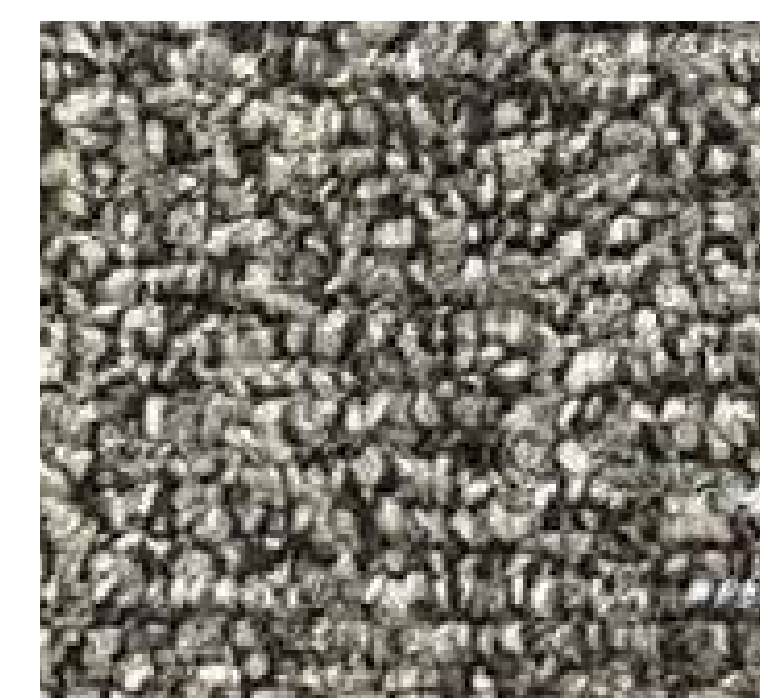


Charcoal Black

CARPET COLOUR SELECTION



Black



Silver (M POD Only)

SOFA

FABRIC COLOUR SELECTION



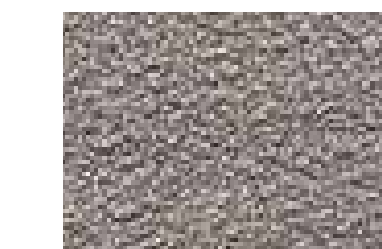
1001

Oyster White



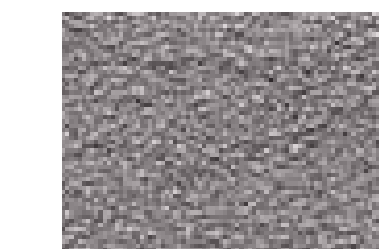
1002

Beige Grey



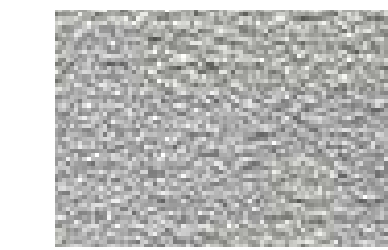
1003

Brown Grey



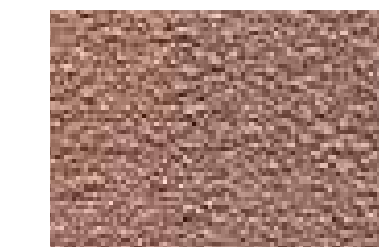
1006

Dark Grey



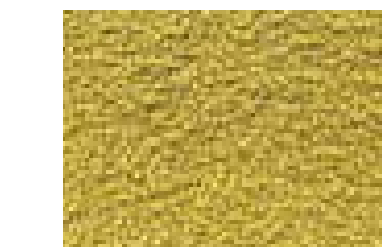
1007

Grey



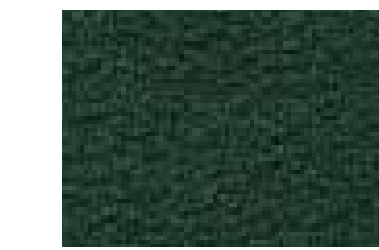
1009

Brown



1011

Yellow



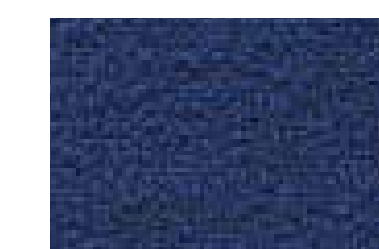
1014

Dark Green



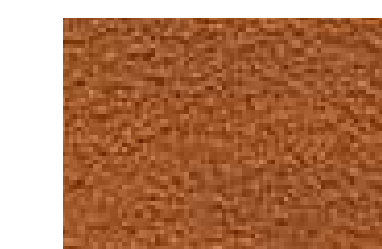
1015

Blue



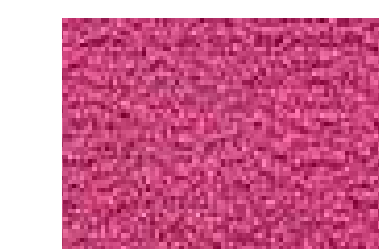
1016

Dark Blue



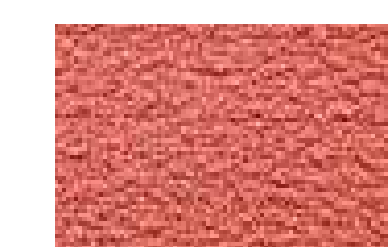
1020

Orange



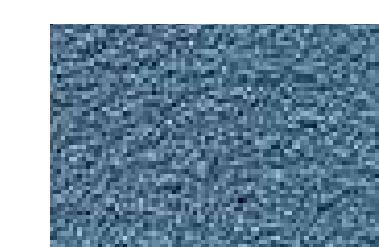
1021

Purple



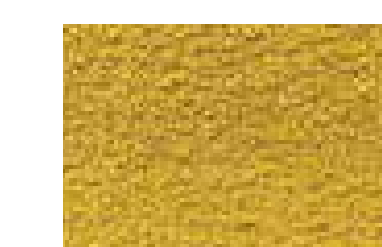
1022

Peach



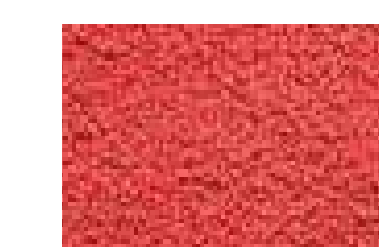
1023

Sky Blue



1026

Lemon Yellow



1027

Brown Red



(021) 54361118

highpointoffice.com

highpoint_office