



METAL
STORAGE





GRANADA

Metal Storage





A2DLFC



A3DLFC

ITEM CODE

A2DLFC

A3DLFC

Description

2 Drawers Lateral Filing Cabinet

3 Drawers Lateral Filing Cabinet

Dimension

W.910 - D.460 - 710 mm

W.910 - D.460 - 1010 mm

Features

Full Extention Drawer; Anti - Tipping Mechanism



A2DRFFCSH



A3DRFFCSH



A4DRFFCSH



FASTENER FREE



**MULTI FOLDING
STRUCTURE**



ANTI TIPPING

A2DRFFCSH	A3DRFFCSH	A4DRFFCSH
2 Drawers Filing Cabinet	3 Drawers Filing Cabinet	4 Drawers Filing Cabinet
W.464 - D.620 - 710 mm	W.464 - D.620 - 1010 mm	W.464 - D.620 - 1320 mm

Full Extention Drawer; Anti - Tipping Mechanism

LOCKER

CUPBOARD

RACKING



AISL2



AISL3



AISL4



AISL6



AFSLDG



AST1



AST3



ASAR



FASTENER FREE

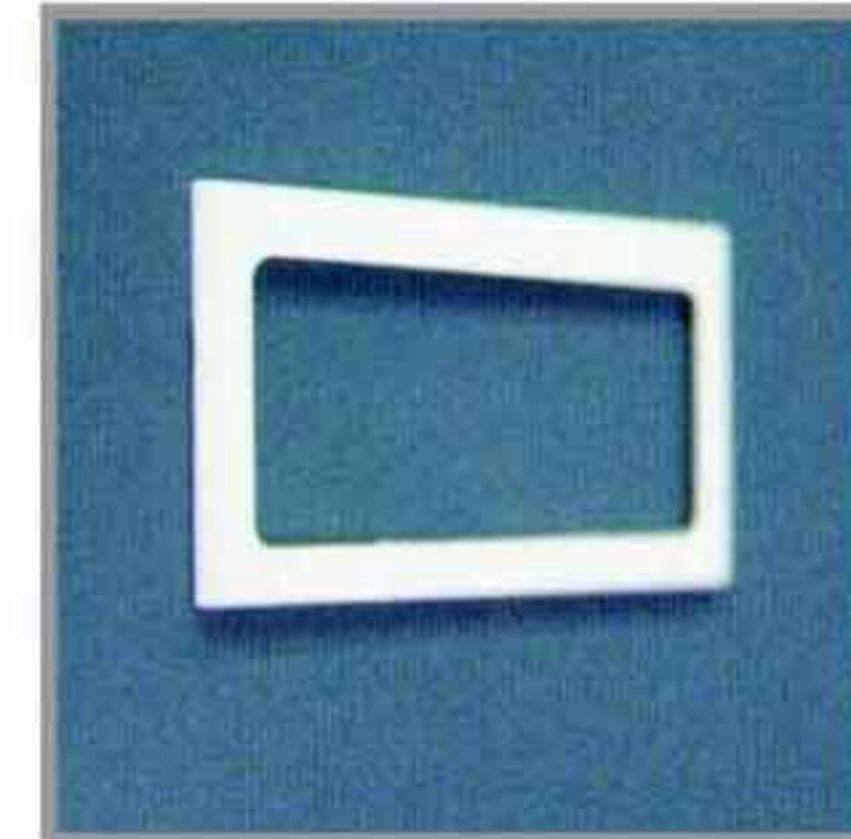


MULTI FOLDING STRUCTURE

ITEM CODE	AISL2	AISL3	AISL4	AISL6	AFSLDG	AST1	AST3	ASAR
Description	2 Compartments Locker	3 Compartments Locker	4 Compartments Locker	6 Compartments Locker	Cupboard Glass Sliding Door	Swing Door Cupboard		Slotted Angle Rack
Dimension	W.380 - D.457 - 1830 mm				W.914 - D.465 - 1830 mm	W.914 - D.465 - 914 mm	W.914 - D.465 - 1830 mm	W.914 - D.457 - 2000 mm
Features	Hanging Rod; Louvers and Card Holder		Louvers and Card Holder		3 Shelves	1 Shelve	3 Shelves	3 Shelves



F E A T U R E S



Name Tag Holder



Adjustable Foot Cap



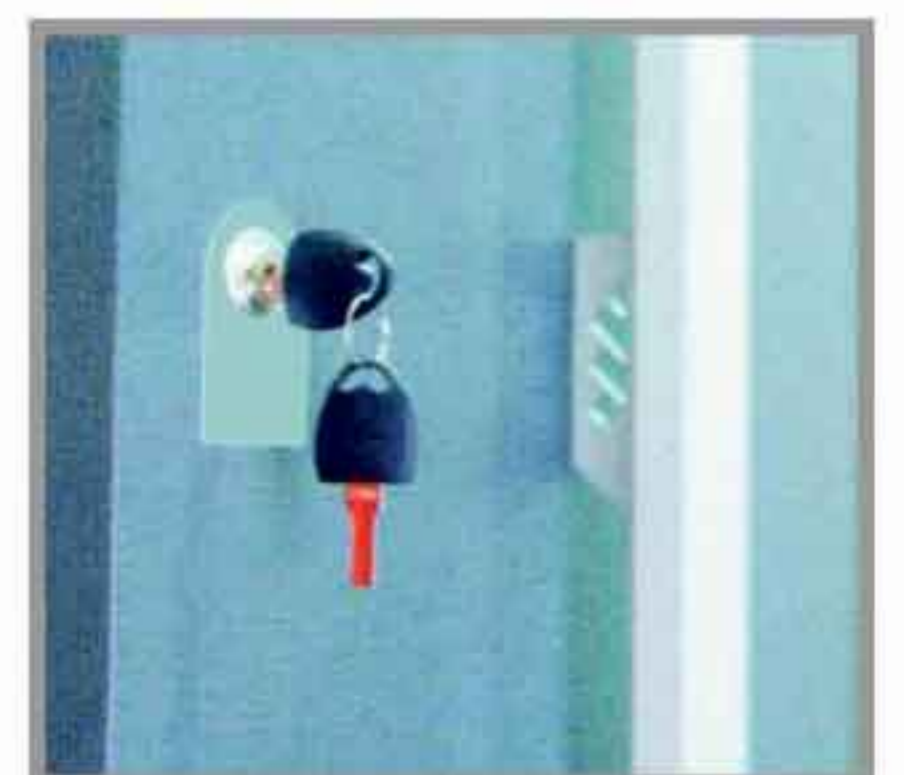
Spacious &
Safe Platform



Smooth Anti-Tilt
Mechanism



Strong & Slick
Steel Handle

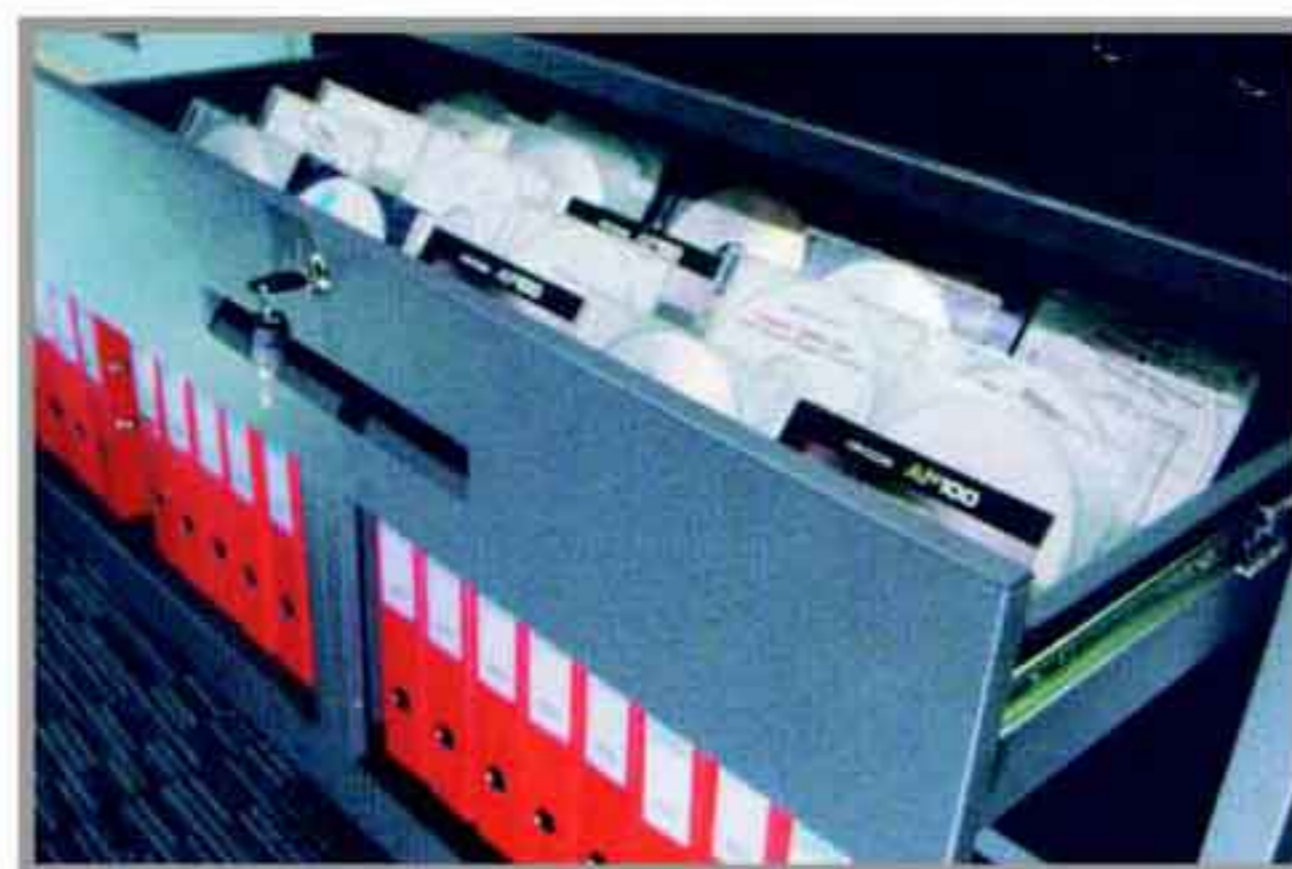


Central
Locking System

ACCESSORIES



CD Drawer



Lateral Drawer



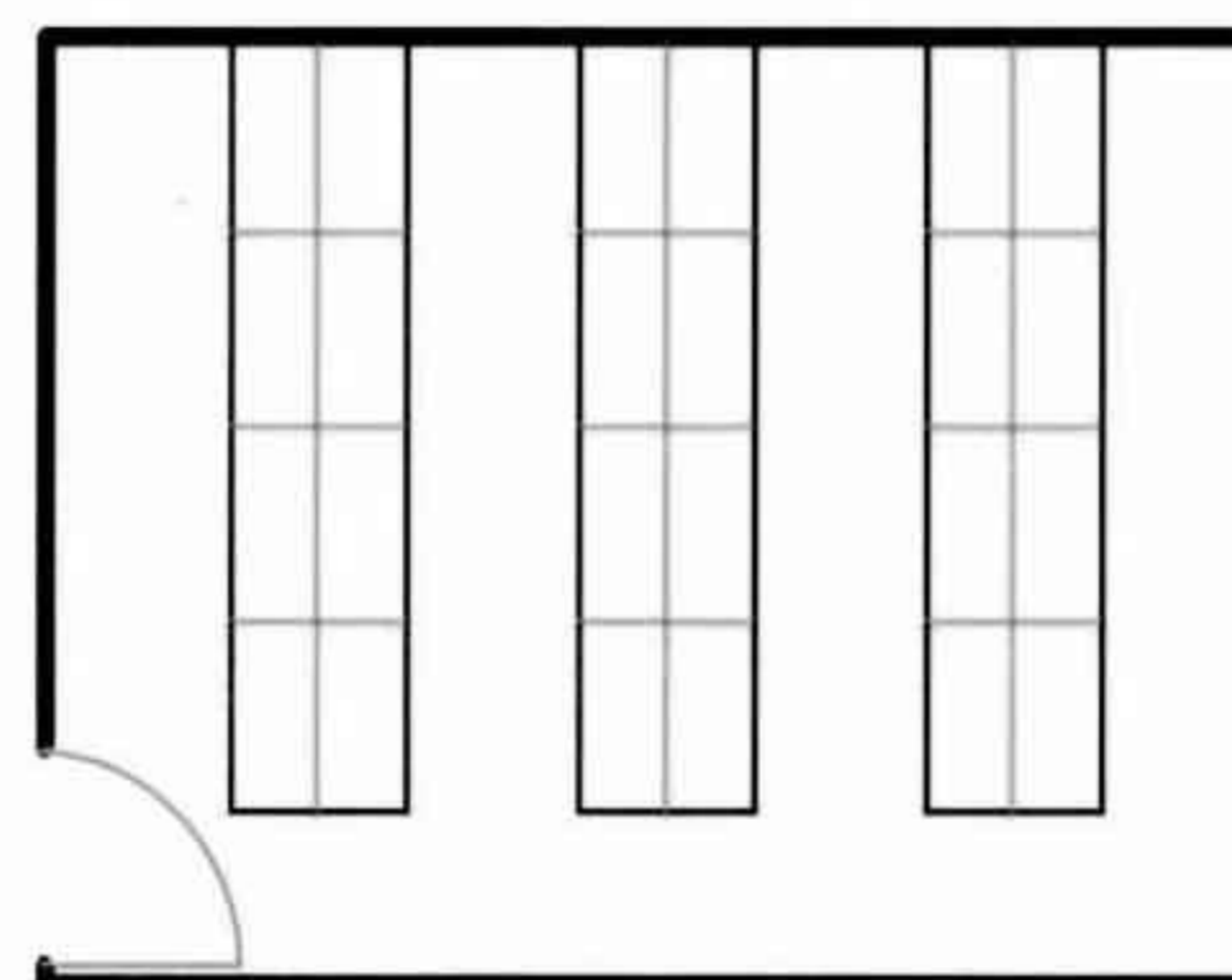
Lateral Frame
(for A4/A3 File Storage)



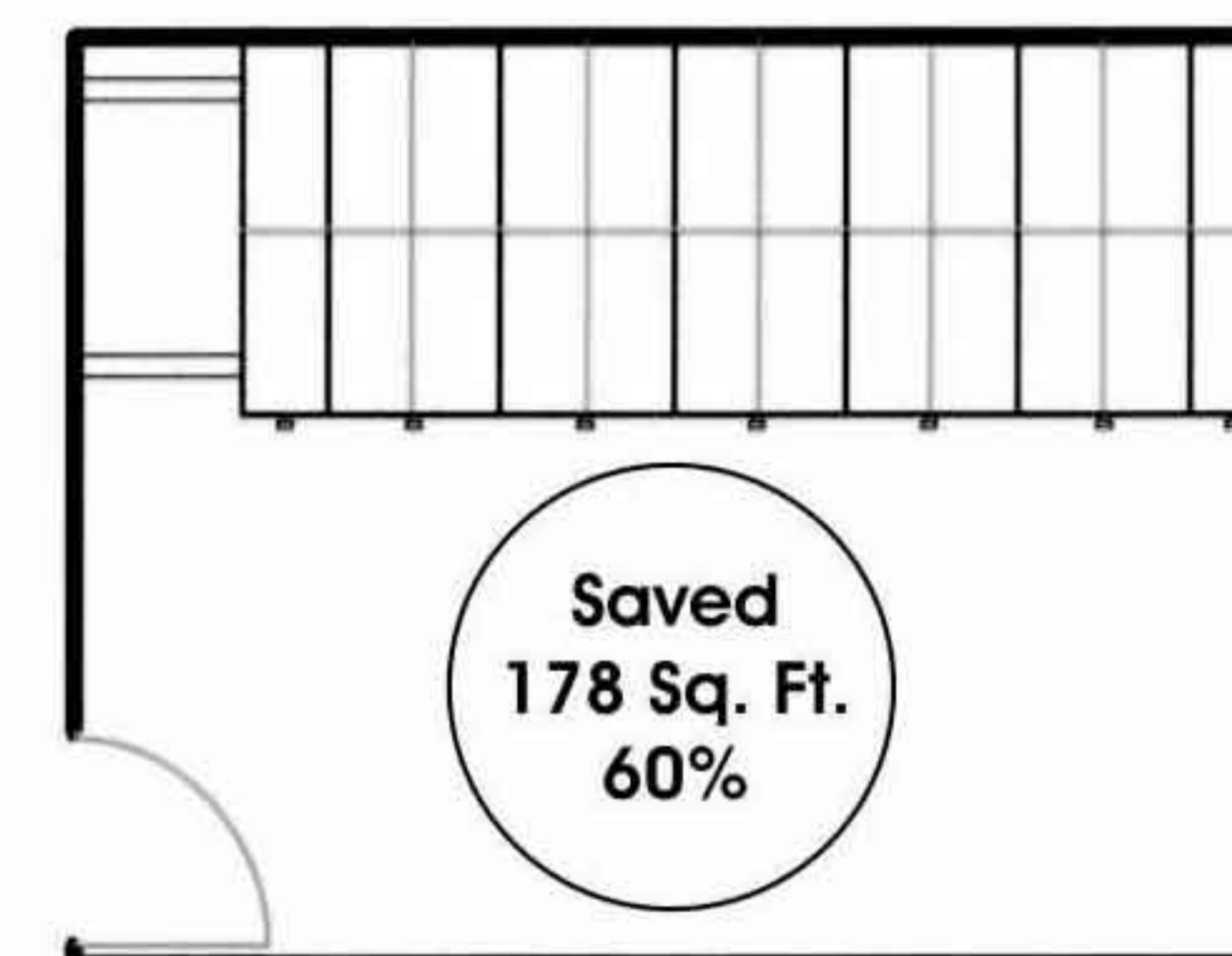
Multi-Purpose
Shelf

Advantages		
GRANADA Mobile Compactor		
<p>Vertical bay insertion methodology able to maximize room space</p> <p>Top Down</p>	<p>Latest adjustable Foot Cap technology, No drill hole & insert metal plate required</p> <p>Adjustable Footcap</p>	<p>Ease to access leveling Technology</p> <p>Top Adjustable</p>
<p>Side Push</p>	<p>Wall Plug Metal Plug</p>	<p>Side Adjustable</p>
Other's Mobile Compactor		

Save Over 60% of Your Valuable Space



24 pcs Full Height Cupboard
288 Sq. Ft.



Granada Mobile Compactor
24 Bays 110 Sq. Ft.

TYPES	4 Bay Single Column					4 Bay Double Column				
Models	MCH4BS	MCH6BS	MCH8BS	MCH10BS	MCH12BS	MCH4BD	MCH6BD	MCH8BD	MCH10BD	MCH12BD
Description	4 Bay Single Column	6 Bay Single Column	8 Bay Single Column	10 Bay Single Column	12 Bay Single Column	4 Bay Double Column	6 Bay Double Column	8 Bay Double Column	10 Bay Double Column	12 Bay Double Column
Dimension (Length)	2430mm	3250mm	4070mm	4890mm	5710mm	2430mm	3250mm	4070mm	4890mm	5710mm
Net Weight	258kg	372kg	486kg	600kg	714kg	453kg	672kg	891kg	1110kg	1329kg
Material	Cold Rolled Steel									
Finish	Epoxy Powder Coating									
Shelf Size	W910 x D368 x H25 mm									
No of Shelf	4 Pieces per Column									
Loading Per Shelf	40kg per Pieces									
Aisle Size	790mm									
Anti Tilt Mechanism	Nylon Guide D40 mm									
Material Thickness	Base : 1mm		Back Panel : 0.7mm		Rail : 3mm		Platform : 19mm Chipboard			
	Top Panel : 0.8mm		Side Panel : 0.8mm		Shelf : 0.7mm					
Rail	Made of 3mm Cold Rolled Steel Using Laser Cut Process and with Adjustable Foot Cap									
Wheel	D60mm Bearing with Nylon Coating					Loading : 150kg / Wheel				
Movement	Left / Right									



highpointoffice.com